

LEASEHOLD

Flat

STUNNING FLAT WITH BEAUTIFUL VIEW LOCATED BY HENDON

Offers In Excess Of

£410,000

FEATURES

- Stunning Views
- 2 Double Bedrooms
- Large Balcony
- Juliet Balconys
- Modern Block
- En-suite
- Modern Fittings
- Lift



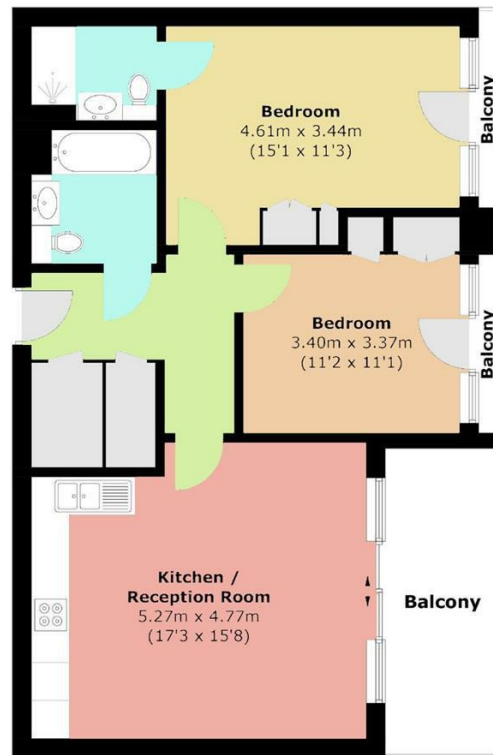
2 Bedroom Flat located in London

Space Residential are pleased to present this beautiful flat located on Moorhen Drive overlooking the Reservoir!

This flat includes a modern reception room with access to a large balcony with stunning views; two Double bedrooms both with Juliet balconies. The larger bedroom has an en-suite shower room and there is also a guest bathroom and a lift at all floors.

Located in Hendon, this flat is surrounded by a lovely neighbourhood with easy access to local amenities, restaurants, and transportation links.

Contact us now on 0208 906 2222 or email info@spaceresidential.com to book in a viewing.



Total area (approx.): 69.1 sq. m (743.8 sq. ft)
Balcony: 10.3 sq. m (110.9 sq. ft)

Call us on

0208 906 2222

info@spaceresidential.com

spaceresidential.com

Council Tax Band

D

Energy Efficiency Rating		Current	Potential
<i>Very energy efficient - lower running costs</i>			
(92 plus) A			
(81-91) B		84	84
(69-80) C			
(55-68) D			
(39-54) E			
(21-38) F			
(1-20) G			
<i>Not energy efficient - higher running costs</i>			
England & Wales		EU Directive 2002/91/EC	

Agents Note: Whilst every care has been taken to prepare these particulars, they are for guidance purposes only. All measurements are approximate and are for general guidance purposes only and whilst every care has been taken to ensure their accuracy, they should not be relied upon and potential buyers are advised to recheck the measurements.

SPACE
RESIDENTIAL